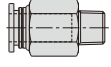
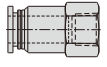
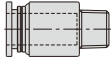



## Metal one-touch fittings

### Ordering code

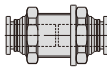
BPC 6 01 □

① ② ③ ④

① Model		② Port size	③ Thread connection	④ Thread type
BPC: Metal male connector 	BPCF: Metal female connector 	4: Φ4mm 6: Φ6mm 8: Φ8mm 10: Φ10mm 12: Φ12mm	M5: M5X0.8 01: 1/8" 02: 1/4" 03: 3/8" 04: 1/2"	Blank: PT
BPOC: Hexagon socket head metal male connector 	BPMF: Metal bulkhead female connector 			

BPM 6

① ②

① Model	② Port size
BPM: Metal bulkhead connector 	4: Φ4mm 6: Φ6mm 8: Φ8mm 10: Φ10mm 12: Φ12mm

### Specification

<b>Operating pressure range</b>	<b>0~9kgf/cm<sup>2</sup>(0~0.9MPa)</b>
Negative pressure	-750mmHg(10Torr)
Proof pressure	1.5MPa
Ambient and fluid temperature (°C)	0~150
Applicable tubing	Soft nylon or polyurethane
Color	Grey/black

Note: The temperature resistance level of the tubing should be confirmed first when used in high temperature environments.

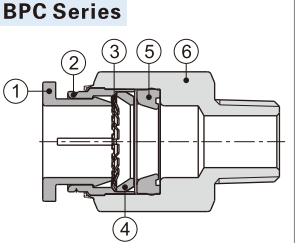
### Product feature

1. High flow capacity; The flow rate of these fittings is equivalent to that of the adaptable tubings.
2. Inserting or removal tubing is simple and convenient, and the connecting portion is reliable and durable.
3. Sealant is coated on threaded portion. The M5 metric thread is attached with a sealing gasket, to ensure no leakage of the threaded connection part.
4. The fitting metal body adopts a special nickel-plating process, which has good corrosion resistance.
5. Metal fittings can be used in high temperature environment.

### Table for interface port and tube O.D.

Product series	Thread type	Port size				
		Φ4	Φ6	Φ8	Φ10	Φ12
BPC	M5	●	●			
	1/8"	●	●	●	●	
	1/4"	●	●	●	●	●
	3/8"		●	●	●	●
	1/2"				●	●
BPOC BPCF	M5	●	●			
	1/8"	●	●	●		
	1/4"		●	●	●	
	3/8"				●	●
	1/2"					●
BPMF	M5					
	1/8"	●	●	●		
	1/4"		●	●	●	
	3/8"				●	●
	1/2"					●
Product series	Port size					
BPM	Φ4	Φ6	Φ8	Φ10	Φ12	
	●	●	●	●	●	

### Inner structure

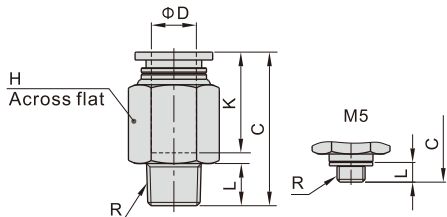
BPC Series		NO.	Name	Material
	1	1	Metal connector	Brass
	2	2	Locating ring	Aluminum alloy
	3	3	Spring gasket	Stainless steel
	4	4	Locating seat	Aluminum alloy
	5	5	Special shape O-ring	Viton
	6	6	Straight connector body	Brass

# Accessories—One-Touch Fittings

## Metal one-touch fittings

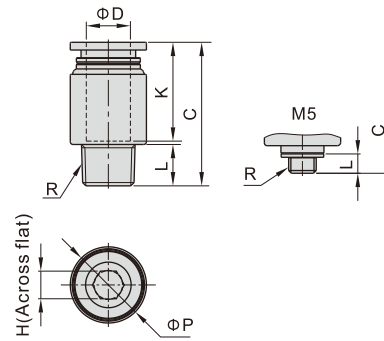
### Dimensions

#### BPC Series



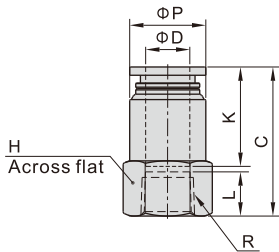
Model\Item	ΦD	R	L	C	K	H	Weight(g)
BPC4M5	4	M5X0.8	3.5	19.5	14	9	5.5
BPC401		1/8"	7.5	19.5	14	10	7.9
BPC402		1/4"	10	19	14	14	8.7
BPC6M5	6	M5X0.8	3.5	22	16	12	10.1
BPC601		1/8"	7.5	21.5	18	12	14.2
BPC602		1/4"	10	24	18	14	19.1
BPC603	8	3/8"	11	22.5	18	17	26.8
BPC801		1/8"	7.5	27.5	18	14	16.1
BPC802		1/4"	10	26.5	18	14	16
BPC803	10	3/8"	11	23	18	17	25.4
BPC1001		1/8"	7.5	29.5	20.5	17	24.5
BPC1002		1/4"	10	32	20.5	17	28
BPC1003	12	3/8"	11	27.5	20.5	17	34.6
BPC1004		1/2"	14	25.5	20.5	21	39.3
BPC1202		1/4"	10	34.5	22	21	44.5
BPC1203	12	3/8"	11	30	22	21	34.2
BPC1204		1/2"	14	32	22	21	47

#### BPOC Series



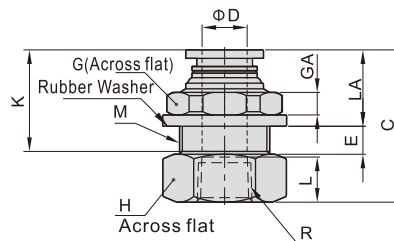
Model\Item	ΦD	R	ΦP	L	C	K	H	Weight(g)
BPOC4M5	4	M5X0.8	9	3.5	18.5	14	2	4.4
BPOC401		1/8"	10	7.5	17.5	14	2.5	6.6
BPOC6M5	6	M5X0.8	12	3.5	21	16	2	7.1
BPOC601		1/8"	12	7.5	21.5	18	4	8.4
BPOC602	8	1/4"	14	10	21.5	18	4	13.6
BPOC801		1/8"	14	7.5	26	17.5	5	12.3
BPOC802	10	1/4"	14	10	24.5	17.5	6	12.7
BPOC1002		1/4"	17	10	28.5	20.5	6	18.5
BPOC1003	12	3/8"	17	11	27.5	20.5	8	24.9
BPOC1203		3/8"	21	11	29.5	22	8	30.4
BPOC1204	12	1/2"	21	14	31.5	22	8	42.4

#### BPCF Series



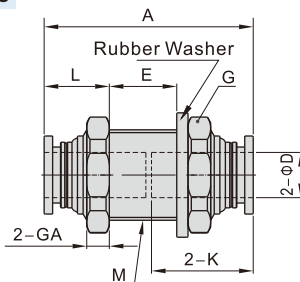
Model\Item	ΦD	R	ΦP	L	C	K	H	Weight(g)
BPCF4M5	4	M5X0.8	9	5	21	14	10	3.5
BPCF401		1/8"	9.5	8	23	14	14	5.3
BPCF6M5	6	M5X0.8	12	5	21	16	12	5.6
BPCF601		1/8"	12.5	8	25	16	14	7.2
BPCF602	8	1/4"	12.5	11	28	16	17	9.2
BPCF801		1/8"	14	8	27	18	14	7.1
BPCF802	10	1/4"	14.5	11	30	18	17	10.6
BPCF1002		1/4"	17	11	32.5	20.5	17	13.5
BPCF1003	12	3/8"	18	12	33.5	20.5	21	17.5
BPCF1203		3/8"	21	12	35	22	21	22
BPCF1204	12	1/2"	21	13.5	36.5	22	25	24.9

#### BPMF Series



Model\Item	ΦD	R	M	L	C	K	LA	E	GA	G	H	Weight(g)
BPMF401	4	1/8"	M12X1	8	25	14	12	4	4	14	14	7.6
BPMF601		1/8"	M14X1	8	25	16	12	5	4	17	17	10.4
BPMF602	6	1/4"	M14X1	11	30	16	12	5	4	17	17	12.2
BPMF801		1/8"	M16X1	8	27	18	13	5.5	4	19	19	13.9
BPMF802	8	1/4"	M16X1	11	31.5	18	13	5.5	4	19	19	15.3
BPMF1002		1/4"	M20X1	11	34.5	20.5	14	7.5	5	24	22	26.2
BPMF1003	10	3/8"	M20X1	12	35.5	20.5	14	7.5	5	24	22	24.4
BPMF1203		3/8"	M22X1	12	37	22	15	8	6	27	24	32.6
BPMF1204	12	1/2"	M22X1	13.5	38.5	22	15	8	6	27	25	31.8

#### BPM Series



Model\Item	ΦD	M	A	K	L	E	G(Across flat)	GA	Weight(g)
BPM4	4	M12X1	28.5	14	10	7	14	4	6.4
BPM6	6	M14X1	33	16	10	11	17	4	16.4
BPM8	8	M16X1	37	18	11	13	19	4	15.8
BPM10	10	M20X1	41.5	20.5	12	16	24	5	28.9
BPM12	12	M22X1	45	22	13	17.5	27	6	40.3